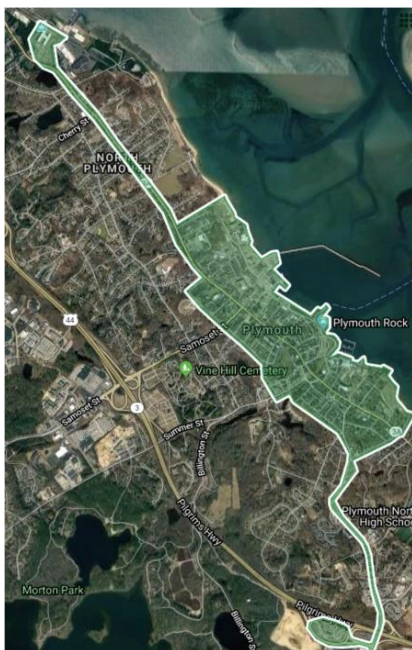


2020 Plymouth Circuit Pilot Program – POSTPONED UNTIL 2021

The PGDC Board of Directors has entered into a Grant Agreement with Destination Plymouth to oversee a “2020 Plymouth Circuit Pilot Program” to be operated by Circuit Transit Inc. in the Town of Plymouth, MA. The 2020 Plymouth Circuit Pilot Program will consist of three (3) GEM (Polaris) electric vehicles circulating throughout the downtown/ waterfront areas of Plymouth on selected weekdays and weekends beginning May 1st through September 30th, 2020. This 5-month pilot program will provide tourists, residents, employees and others with a convenient, flexible and free alternative to walking substantial distances to and from destinations within the downtown/ waterfront areas of Plymouth. It will also encourage people to park farther from their destinations on days when parking in town is in short supply.



Each EV shuttle vehicle will be equipped for all weather and fit up to 5 passengers plus a driver with limited storage in the back for belongings. All rides will be FREE of charge within a defined geofenced coverage area and will be available to all persons on a “hail” basis or by downloading and requesting a ride using the on-demand “Ride Circuit” App. The limits of the geofenced area in the downtown/ waterfront area of Plymouth are shown below, along with the days of the week on which the EV shuttle vehicles will operate. Be sure to check back in April 2020 when additional details on the Pilot Program and the Ride Circuit App will be made available.



May 20							June 20						
Mo	Tu	We	Th	Fr	Sa	Su	Mo	Tu	We	Th	Fr	Sa	Su
				1	2	3	1	2	3	4	5	6	7
4	5	6	7	8	9	10	8	9	10	11	12	13	14
11	12	13	14	15	16	17	15	16	17	18	19	20	21
18	19	20	21	22	23	24	22	23	24	25	26	27	28
25	26	27	28	29	30	31	29	30					

July 20							August 20						
Mo	Tu	We	Th	Fr	Sa	Su	Mo	Tu	We	Th	Fr	Sa	Su
			1	2	3	4						1	2
6	7	8	9	10	11	12	3	4	5	6	7	8	9
13	14	15	16	17	18	19	10	11	12	13	14	15	16
20	21	22	23	24	25	26	17	18	19	20	21	22	23
27	28	29	30	31			24	25	26	27	28	29	30
							31						

September 20						
Mo	Tu	We	Th	Fr	Sa	Su
	1	2	3	4	5	6
7	8	9	10	11	12	13
14	15	16	17	18	19	20
21	22	23	24	25	26	27
28	29	30				

Plymouth Circuit in operation